



Volume 3, Number 2 - February 2022

Notes from the Town Administrator

In my January column I mentioned my goal of enhancing communication between the town and all of you, our residents. It is very important for us to hear your concerns and ideas on how to improve services in town. Toward that end, I am proposing having what I will call “community conversations” on individual topics during which folks can voice their concerns and ideas and ask questions. Given the continuing pandemic, these conversations will be held virtually on Zoom. For a first topic, I would like to address the transfer station, and I have three questions for you:

1. What should we stop doing?
2. What should we start doing?
3. What should we continue doing?

Once a date and time have been set, we will hand out flyers with the link and agenda at the transfer station. And if you have questions you would like to have addressed, please feel free to email me at townadmin@townofconway.com ahead of time so that I can be sure to have answers on hand for you. I do plan to record these sessions to be sure that I capture all the ideas and concerns put forward, but this will be a much less formal session than a selectboard or town meeting.

If you are new to town or have not received a robo call from the town in a while, please click on the Conway’s Emergency Alert System link on the town website’s front page, www.townofconway.com, to sign up or to update your information. Please also check the box to accept texts if that is your preferred method of contact. Remember, we can’t contact you in case of emergency or important updates unless you sign up.

Thank you all, and please stay safe.

Véronique

From the Board of Health

The Board of Health wants to briefly discuss some guidelines regarding use of the rapid antigen tests available for detecting COVID-19. The rapid test can detect the virus in only about 80% of people with COVID-19 symptoms and in less than half the people who take the test when they are asymptomatic (without symptoms). This information is from the Infectious Diseases Society of America.

If you are asymptomatic or are just checking before an event to be sure that you do not have COVID-19, you may not get an accurate result from a rapid test. The best test to take in these circumstances is the PCR test, which is available at Greenfield Community College. To preregister for a test, go to <https://www.mass.gov/info-details/covid-19-test-site-details?FID=2490>

If you are symptomatic, such as with a sore throat, cough, cold, or headache, for example, and you test negative with a rapid test, you should consider yourself positive until a PCR test also proves negative. A PCR test is nearly 100% accurate in detecting COVID-19 in people with or without symptoms.

Four free rapid test kits are available at <https://special.usps.com/testkits>. Be sure to read all provided instructions carefully before taking a rapid test, and remember that rapid tests are most accurate if you are symptomatic.



Conway Council on Aging

The COA receives a grant from the state Executive Office of Elder Affairs and an appropriation from the town. Meetings are held on the first Wednesday of the month at 9:00 a.m. in Town Hall. Next meeting will be February 2. For more information, contact Patricia Ann Lynch, COA chair, at 369-4284 or email patricialynch@earthlink.net.

Senior Calendar for February

"First Friday" Walk-in Wellness Clinics Clinics are held on the first Friday of the month in Conway Town Hall from 9:00 a.m. to 12:00 noon. Regional public health nurses Lisa White, RN, and Meg Ryan, RN, staff the clinic. There are no out-of-pocket costs to residents for this service, which is provided through the town's membership in FRCOG Cooperative Public Health Service. For more information, call 413-665-1400 x 114.

Grab-and-Go Meals The COA offers fully prepared meals from LifePath most Thursdays at noon for curbside pickup at Town Hall. All meals in February will be grab and go, but on February 10 the meal will be homemade sandwiches. Menus vary. For more information or to sign up for a meal, call Carolyn Thayer at 369-6948. LifePath suggests a voluntary donation of \$3.00 per meal ordered.

Healthy Bones & Balance Classes These free classes, sponsored by RSVP, offer a combination of upper body, lower body, core, and balance exercises. Classes meet on Tuesday from 9:00 to 10:00 a.m. and Friday from 9:00 to 9:30 a.m. on Zoom. Contact leader Gary Fentin at 369-0001 for information and the Zoom link.

Monthly Foot Care Foot clinics are usually held on the first Monday of the month in Town Hall by appointment only. The next

clinic will be February 7. There is a \$20.00 fee. For information or to schedule an appointment, call Peg Tiley at 369-4010.

Yoga for Seniors Led by Jody Fontaine on Wednesdays at the library. These are hybrid classes with an option for Zoom streaming. Class times: mat yoga 10:00-11:00 a.m., chair yoga 11:30 a.m. – 12:15 p.m. Call Jody at 413-824-9435 for the Zoom links.

Senior Services

Durable Medical Equipment Loans The COA has items of durable medical equipment available for loan, including wheelchairs, walkers, crutches, canes, tub and shower chairs, commodes, and raised toilet seats. Call Hank Horstmann at 369-4405 to borrow equipment. Owing to lack of storage space, we are currently unable to accept donations of equipment.

Home-Delivered Meals Meals on Wheels are provided by LifePath for Conway seniors seven days a week. Call LifePath at 773-5555 for further information and registration.

Transportation for Medical Appointments and Shopping The Shelburne Falls Senior Center provides curb-to-curb van transportation within Franklin County for seniors 60 and over, for in-county medical appointments and grocery shopping. Call the center at 625-2502 to make an appointment at least 48 hours in advance or for information about reservations and fees. A short application with a copy of a photo ID is needed to be pre-approved for ridership. Fares range from \$.75 to \$2.25 each way. For rides to out-of-county medical appointments, call the FRTA at 774-2262 x 163 for information and reservations.



Senior Snowshoe Hikes

Hilltown Land Trust is pleased to once again be partnering with All Out Adventures in offering a series of senior snowshoe treks this winter. Join us Wednesday mornings for one- to three-mile snowshoe walks along beautiful, snow-covered trails through the DAR State Forest in Goshen. There will be two treks per day, departing at 10:00 a.m. and 12:00 noon, divided into multiple groups by ability level and interest. In the event of insufficient snow cover, groups will hike together instead. Please arrive 15 minutes before the hike to sign in and get geared up. Beginners are encouraged to attend!

Snowshoes, poles, and traction aids will be provided free of charge. There is no cost to attend, although a donation of \$5.00-\$20.00 in support of All Out Adventures programming is appreciated. Masks, social distancing, and passing a COVID-19 symptom screen are required.

Please check All Out Adventures activities calendar for more dates and locations. Preregistration through All Out Adventures by email, info@alloutadventures.org, or phone, 413-584-2052.

Senior Snowshoe Hike Dates

Wednesday, February 2
Wednesday, February 23
Wednesday, March 16

Questions? Email Sarah: sarah@hilltownlandtrust.org

The deadline for articles and ads in the newsletter is the 20th of the preceding month. Please send your content, comments and suggestions by email to Kathy Llamas at conwaycurrents@gmail.com. Send your advertising requests to Louise at lmbeckett@crocker.com. Thank you!

Winter Vaccine Clinics in Franklin County

Mobile COVID-19 vaccination clinics are being offered at several locations in Franklin County this winter. Youths ages 5-18 are eligible for the vaccine. Everyone age 12 and over is eligible for a booster shot. Parents/caregivers who need a vaccination or booster are welcome to get a shot at the same time as their child is vaccinated. Adult community members without children are welcome at school-based clinics, but please select an appointment slot later in the day. All three vaccine types – Pfizer, Moderna, and Johnson & Johnson – are available at each clinic. Flu shots are also available.



From the Conway Town Website, look for “Winter Vaccine Clinics in Franklin County” to find out where to register at the following sites:

Thursday, February 3, Mohawk Trail Regional School
Buckland, 1:00 - 6:00 p.m.

Friday, February 11, Pioneer Valley Regional School
Northfield, 2:00 - 6:00 p.m.

Wednesday, February 16, Jon Zon Community Center
Greenfield, 2:00 - 6:00 p.m.

Tuesday, February 22, Franklin County Technical School
Turners Falls, 2:00 - 6:00 p.m.

Looking for other options? Visit www.bhninc.org to find other clinic dates and locations in western Mass. The Franklin County Mobile Vaccination Clinics are cosponsored by the Mass. Department of Public Health, Behavioral Health Network, and participating local school districts, with support from the Franklin Regional Council of Governments.

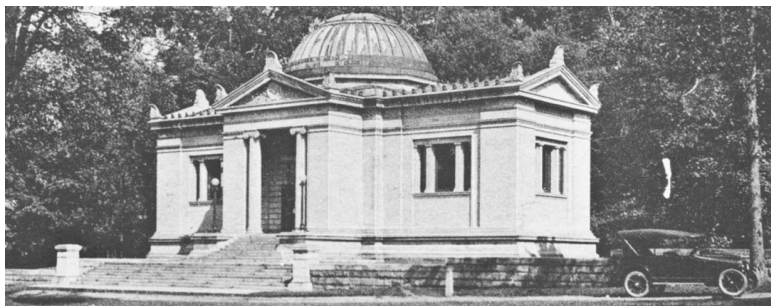
Update from the Field Memorial Library

Sara and I completed our CWMars cataloging training today, and we are excited about entering this phase! I will be in contact soon (and may have already done so when you read this) with details about volunteering for those who have expressed interest in helping us with this task. We have approximately 14,000 items to attach to the CWMars database, and as librarians, we look forward to having our collection searchable by you from any of your digital devices wherever you are!

The library friends group is sponsoring two workshops in the coming weeks: "Exploring Creative Writing" and "In Praise of Listening." Details are on the FML website and elsewhere in this issue.

With so much going on behind the scenes, I'll keep this column short, but please know that we have many new and existing titles for your educational, informational, and entertainment interests. For now those can be browsed only in person, so feel free to come in or call or email with any requests or interests. The FML's open hours are Monday 3:00-6:00 p.m., Wednesday 2:00-7:00 p.m., and Saturday 10:00 a.m.-2:00 p.m.

David Whittier, Director, Field Memorial Library
director@fieldmemoriallibrary.org
Phone 413-369-4646 <https://fieldmemoriallibrary.org>



Field Memorial Library, detail, by Florence Howland. This image was used on a postcard. *Courtesy Conway Historical Society*

Wanted: Young Creative Writers

The Friends of the Field Memorial Library in Conway are offering an exciting creative writing series for local 4th- to 6th-graders. The workshop, "Exploring Creative Writing," will be held over four Wednesdays this spring on March 30 and April 6, 13, and 27. Each session will start at 3:30 p.m. and finish at 5:00 p.m. Participants will have an opportunity to share their work with the community on the evening of May 4 at the library.

The workshop, open to young people in Conway in grades 4 through 6 (public, private, or home schooled), has a maximum of ten students. The workshop leader, Jacqui Goodman, is a retired teacher who lives in Shelburne Falls. We are thrilled to have Jacqui present this workshop, and she promises that it will engage the hearts and minds of young people in Conway. She has more than 38 years of teaching experience in public and private schools, most of which was spent teaching grades 4 through 6.

Registration is open from February 7 to March 21: first-come-first-registered. There is a \$5.00 fee at registration for snacks/drinks. The workshop will provide all needed materials at no cost.

To register, get an electronic application from the library website at <https://fieldmemoriallibrary.org/> or email Jacqui for information and/or to register at jgnb@comcast.net. The Friends of the Field Memorial Library give thanks for funding support from the Conway Cultural Council, part of the Mass Cultural Council.



Always wanted to try writing poetry?

The Friends of the Field Memorial Library in Conway is offering a friendly, virtual poetry workshop on Saturday, February 12, from 10:00 a.m. to 2:00 p.m. The workshop, "In Praise of Listening: Exploring Ourselves Through Poetry," is open to both high school teens 14 years and up and adults. Experienced and new writers/poets are especially welcome! The workshop will build on each participant's experience so that younger and older writers can energize and inspire each other as well as use the genre of their choice to write, share, and discuss their work.



Christian McEwen by
Joanna Eldridge Morrisey

Christian McEwen grew up in the Borders of Scotland and now lives in Williamsburg, MA. She is the author of several books, including *World Enough & Time: On Creativity and Slowing Down*, now in its eighth printing. She is currently working on a book called *In Praise of Listening*. Learn more about Christian at <https://www.christianmcewen.com>.

The workshop is open to all; however, there is a \$10.00 registration fee. Participants will be invited – not required – to share their work with the community at a later date. Registration is open now. Email Karen at keldred01341@yahoo.com for information and/or to register.

The Friends of the Field Memorial Library give thanks for partial funding support from the Conway Cultural Council, part of the Mass Cultural Council.

Stop Asian Hate: China Is Not Our Enemy

with Allison Lau

Join us via Zoom on **Saturday, February 5, at 1:00 p.m.** online. Please register in advance for this meeting by clicking this link: https://us02web.zoom.us/join/zoom/register/tZAkduqrqTooGdCMIPLor_32ocK9KhG-YU7F. You will receive a confirmation email containing information about joining the meeting. This program is free. Donations are welcome!

Anti-Asian sentiment and hate crimes against Asians in the U.S. have been increasing since the beginning of the pandemic. This violence is directly linked with the U.S.'s current engagement in multi-domain "hybrid warfare" with China. The only way to stop violence against Asians domestically is to stop the U.S.'s aggression and hybrid war on China. China is not our enemy!

Allison Lau is the China Is Not Our Enemy campaign coordinator at CODEPINK. She is also the director of operations at *Queer Toronto Literary Magazine*. Allison earned a bachelor's degree from McGill University and a master's in international development from the Global Development Institute at the University of Manchester.



Our programs are supported in part by grants from these local cultural councils: Amherst, Ashfield, Bernardston, Buckland, Charlemont-Hawley, Conway, Deerfield, Gill, Greenfield, Heath, Montague, New Salem, Northfield, Orange, Rowe, Shelburne, Warwick, Wendell, and Whately, local agencies that are supported by the Mass Cultural Council, a state agency.

Racial Justice Rising, PO Box 261, Greenfield, MA 01302
racialjusticerising.org

Meet Me at the Station

by Kathy Llamas

The transfer station has been its usual busy hub of activity. The station agents have been bustling despite the frigid temperatures, and the Conway Mall has continued to provide the residents of Conway opportunities to share items that they no longer need – items that other people are interested in taking.

Please keep in mind that donated items should be clean and in good – very good – condition. If you wouldn't wear an item yourself, please place it in the Salvation Army bin. They will recycle such items into rags. Otherwise, that work falls to the mall volunteers, which slows down their progress in prepping the clothes and household goods for the racks and shelves. Some donations have included garbage and car clean-out. This has been frustrating because the clothes weeded out from the trash are soiled and unusable. Several toy donations have arrived quite dirty, with broken and/or missing pieces. The mall has no access to water for cleaning them, so readying such items for children to enjoy has been difficult. Thankfully, these do not represent the bulk of donations coming in.

Owing to COVID-19 concerns and the frigid temperatures, the mall will be operating on a limited basis this winter. The mall will be open and accepting donations only on Sunday, February 6, and Sunday, March 6. The mall will resume its regular Wednesday-Saturday-Sunday schedule starting April 2.

We all look forward to seeing you in the days ahead! Until next time!



Conway Creator: Pat Lynch

by Carol Baldwin

Pat is known locally for the many hats she wears in service to our town. What you may not know about her is that she's a Conway creator. Pat has had a great interest in photography for most of her adult life, and her international travels have led to scores of stunning photos that she has exhibited over the years and posts occasionally on Facebook. She has also had photos printed in various publications; she is especially proud of one she took of civil rights leader Whitney Young. Pat also enjoys taking short drives to look for local sites to photograph. With her sharp eye, she captures natural beauty wherever she finds it.

Due to pandemic restrictions, we communicated via email for this article.

CB: When did your interest in photography begin?

PL: I really can't remember. My stepfather took photos, developed & printed them, so that might have begun my interest. My serious interest began in college.

CB: Have you studied formally?

PL: I was an art major with a minor in philosophy at Brooklyn College & studied photography with Walter Rosenblum. He was a WWII combat photographer, landed on Normandy Beach on D-Day, took the first motion picture footage of the liberation of Dachau. I was greatly influenced by his work ethic: a direct and honest approach to photography, avoiding manipulation of either the subject or the photograph. He was well known for his work in New York City, particularly photos of immigrants & the poor taken in the '30s and '40s.

CB: What has been one of your most memorable experiences as a photographer?

PL: Carol, that's [really] impossible to answer! There were places that awed me: Kumamoto Castle in Japan; Haleakala Crater in Hawaii; the magnificent Jain temple at Ranakpur, India; the Potala Palace in Lhasa, Tibet; the Bayon in Cambodia – more impressive than Angkor Wat.

Most memorable? Probably the people. I keep returning to one photo that I took because it always makes me smile: a herder of goats in India. One of the main features of Professor Rosenblum's work was that he was drawn to situations that revealed the experiences of immigrants, the poor, ordinary people. That's always drawn me more than landscapes or structures.

CB: What camera(s) do you use, and why?

PL: My very first camera was a Ricohflex, an inexpensive Japanese version of the Rolleiflex, a twin-lens reflex camera. When the Ricoh fell apart, I bought a real Rolleiflex, used, which I still have – purchased in 1958, I think. My first digital camera was a Canon EOS Rebel, and I still use Canons today because I like their solidity, their weight. I tried a mirrorless camera, which are popular today, but I rejected it because it felt so insubstantial in my hands. I also have a little Olympus TG-6: TG for "tough guy," which it is, and it has an extremely versatile lens and fits into a pocket. Digital cameras are easy and provide near-instant gratification, but I do miss darkroom work, the image emerging in the chemical bath.

CB: What are your preferred subjects, such as landscapes, people, or animals?

PL: People. Carol, I know this sounds pretentious, but it's what I wrote for an "artist's statement" for an exhibit: "My aim is to capture a moment in time that reveals something about the person I'm photographing, that gives an insight into a world and a life."

Unheard Melodies

by Nicole Braden-Johnson

"Heard melodies are sweet, but those unheard /Are sweeter"
– John Keats *"Ode on a Grecian Urn"*

Of One Mind?

How far apart are they on taste and truth?
He favors good, old apple pie with cream;
An awful taste that makes her nearly cry.
Her hair emits a pear and lilac scent;
But he prefers a sandalwood accent.
The weather suits him best in mid-July;
A season she would rather let fly by.
To join together seems a grave torment.

Both like to plant sweet peas and watch them grow;
Would gladly dress a wound but never cause one;
Hope to drain the swamp of filth and stink;
Prefer a happy life to one of woe;
Wish harm and unearned misery on none;
Have more beliefs that fit than those that don't.

Currents Advertisements & Notices

Rates for ads up to 150 words are: one month \$7.75, three months \$15.75; six months \$25.75, twelve months \$44.75. For cost of longer ads or to include images (limited), call or email Louise at 413-559-1180 or lmbeckett@crocker.com.

Pay by checking account or credit card through the town's website: <https://townofconway.com/> > [View or Pay a Bill](#) > [Pay Newsletter Advertising](#) or send a check to **Conway Currents, PO Box 240, Conway, MA 01341**. Please send the text of your advertisement to Louise by email at lmbeckett@crocker.com. **Deadline is the 20th of the preceding month**. If you want to discuss your ad or have any questions, please call or email.

Employment Opportunities With the Town of Conway

Administrative Assistant – Boards, Commissions

The Town of Conway is seeking a part-time Administrative Assistant, reporting to the Town Administrator and serving the Conservation Commission, Planning Board, and Zoning Board of Appeals, with further work possible. The position averages 5 hours per week. The successful candidate will have good written and verbal skills to effectively communicate with other municipal employees and the general public, and demonstrated clerical skills, including familiarity with computers and MS Office programs. The successful applicant will post meetings, take minutes and perform bill tracking and record keeping. Compensation rate is \$18/hr. Candidates should submit a letter of interest and résumé, along with the Town's general job application to: **Administrative Assistant: Boards/Committees, Attn: Selectboard, PO Box 240, Conway, MA 01341**. Position open until filled. The Town of Conway is an Equal Opportunity Employer.

Clerk/Administrative Assistant – Highway Department

The Town of Conway is seeking a Clerk/Administrative Assistant to support the Highway Department (includes buildings and grounds). The successful candidate will have good written, verbal, and other clerical skills, be able to communicate effectively with other municipal employees and the general public, and be familiar with Word, Excel, internet, and e-mail applications in a Windows environment. 8 hours per week, \$18/hour (unbenefitted).

Applications will be accepted immediately; position open till filled. **E-mail application to highway@townofconway.com or mail to Highway Superintendent, P.O. Box 240, Conway, MA 01341.**

To view the job descriptions and the general job application, go to <https://townofconway.com/employment-volunteer/>

The Town of Conway is an equal opportunity employer.

The Conway Inn - Open for pizza, chicken wings, and breadsticks, Friday and Saturday, 4 - 10 p.m.; Sunday 5 - 8 p.m. Call 413-369-4428 for takeout. Thank you for supporting your local businesses!



Your Home Town Realtor - As a Conway resident for over 20 years, I provide local, attentive and trustworthy service for both buyers and sellers in our community. Previous experience as a licensed residential architect is valuable for my clients. Please contact me for a free, no obligation consultation! Sarah Newman, Realtor with Coldwell Banker Community Realtors. Call or text: 413-548-6525 or email sarah.newman@cbcommunityrealtors.com - Thank you!



Baker's Country Store - open seven days a week for all-day take-out breakfast and lunch. Hours: Monday-Friday 6 a.m. – 6 p.m.; Saturday and Sunday 7 a.m. – 5 p.m. Call 369-4936. Find a variety of homemade desserts and baked goods and a large selection of last-minute items. We always have freshly baked cakes, muffins, pies, and cookies - put in your order today for one of Helen's famous pies! Check us out on Facebook: facebook.com/Bakers-Country-Store for today's specials.

Join Natural Roots CSA - for delicious, fresh vegetables grown right here in Conway. We have several CSA share options, including part-time and low-income shares, main season (June through October) and winter shares. Our farm store is also open to the public year-round during daylight hours. We offer eggs from our own pastured hens as well as other local items like beef, chicken, pork, dairy, bread & baked goods, honey & maple products, coffee & tea, ice cream, snacks, beverages and more! Support a horse-powered farm in Conway and enjoy this beautiful, bountiful farm and the vibrant community that we feed. www.naturalroots.com. Natural Roots, 888 Shelburne Falls Rd., Conway, MA 01341, (413) 369-4269, farmers@naturalroots.com.

Support your local church - by shopping for Rada Cutlery! All cutlery is made in the USA and includes a lifetime guarantee. Not just cutlery but knife sharpeners, cookbooks & giftbooks, non-scratch cooking utensils, baking pans, cutting boards, gadgets, nifty tools and quick mixes. Choose from many options, sure to help you in performing any kitchen task and creating all your favorite recipes! And your purchases will support the United Congregational Church! Paper catalogs available by request. To order, call Muriel Antes at 369-4350 or Tina Burnett at 369-8035, or use this simple link: bit.ly/3mTpO18.

Viola and violin lessons with Geoffrey Baker - 215-760-0729. String players of all ages and ability at my Conway studio at 28 Main Street. Experience the fulfillment of playing Bach, Mozart, the Beatles, Bruno Mars, Fire on the Mountain, or anything you like with a bow and four strings. My teaching philosophy: you are an athlete as well as an artist when you play an instrument and playing live music is for your entire life, so why not improve now or pick up where you left off? I have worked with teens in large classes, children in small groups, and coached adults in chamber music. It's never too late to begin! My learning foundation combines technique, expression, and theory to give you the tools to grow. I know from experience that teaching is about reaching people. Learn more at www.geoffreybakermusic.com.

Jan and John Maggs Antiques - Climbing the Walls sale. It's February again and, if winter and Covid have you climbing the walls, you might enjoy a look at the walls of our showrooms in Pumpkin Hollow. You'll see visual artworks from the seventeenth century to the twentieth by American, European, and Asian artists, including works by Americans Stephen Maniatty, Raymond Ingraham, and Dennis Sheehan. Should you decide that something on our walls would brighten yours, you'll be happy to know that we're offering a 20% discount on all artwork throughout the month of February. The Paintings Gallery on our website jmaggs.com includes views of the walls of our shop, so that you can see artwork in context. But you're welcome to come and see them in person. To arrange a visit, please call (369-4256) or email jmaggs@jmaggs.com.



Wilder Hill Gardens - Contact us in March/April to schedule a spring consultation or pruning for your property. Wilder Hill Gardens reopens in April for plant sales. Our Mother's Day Weekend Sale is a great manual event! Stay tuned for information on a direct-from-the-field Dig Sale, a fun and economical way to expand your gardens with strong field-grown shrubs chosen to thrive and bloom in our climate. Here's to a warm winter to all and see you in the spring! 351 South Shirkshire Road, Conway MA. 413 625-9446. Wilderhillgardens.com. Email lilianjackman@gmail.com

The Days are Getting Longer - and it's time to think about grafting. We offer an excellent resource *The Manual of Plant Grafting* for in-depth information. We have grafting wax, seal, tape, knives and tools to complete the job. We carry a variety of skidding tongs and woodlot tools like peavey's and cant hooks. Pine Hill is still making cider – good time to pair that with the *Ciderhouse Cookbook*. Come in and shop where the pros shop. And thanks for buying locally! OESCO – Orchard Equipment, Co., M-F: 7-5; 369-4335.





Whately Road Berries and Cattails, Patricia Ann Lynch

Town of Conway
P. O. Box 240
Conway, MA 01341

Presort-STD
US POSTAGE PAID
PERMIT No. 701
Greenfield, MA 01301

ECRLOT
BOXHOLDER
Conway, MA 01341